

# POWERHOUSE MX™ ACHE TIMING SPROCKETS

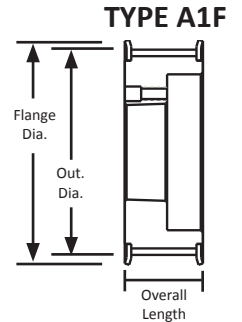
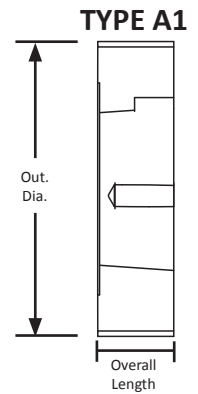
(Compatible with Poly Chain® GT® Carbon belts)

**8 mm Pitch**  
**For 21 mm Wide Belts**  
**Iron**  
**Black Oxide Plating**  
**QD® Style**



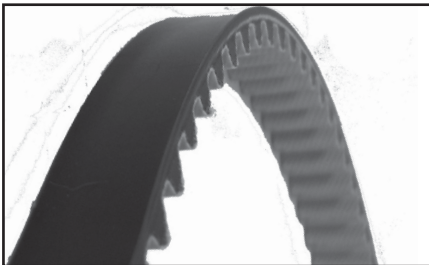
**For ACHE (Air-Cooled Heat Exchanger) Applications**

| Part Number   | No. of Teeth | Type | Pitch Dia. (in) | Out. Dia. (in) | Flange Dia. (in) | Bushing | Face Width (in) | Overall Length (in) | Wt. Ea. (Lbs.) | Material     |
|---------------|--------------|------|-----------------|----------------|------------------|---------|-----------------|---------------------|----------------|--------------|
| F36-8MX21-SH  | 36           | A1F  | 3.609           | 3.546          | 3.938            | SH      | 1.203           | 1.203               | 2              | Ductile Iron |
| F38-8MX21-SH  | 38           | A1F  | 3.810           | 3.747          | 4.156            | SH      | 1.203           | 1.203               | 2              | Ductile Iron |
| F40-8MX21-SH  | 40           | A1F  | 4.010           | 3.947          | 4.331            | SH      | 1.250           | 1.250               | 2              | Ductile Iron |
| F42-8MX21-SH  | 42           | A1F  | 4.211           | 4.148          | 4.687            | SH      | 1.250           | 1.250               | 3              | Ductile Iron |
| F140-8MX21-SF | 140          | A1   | 14.036          | 13.973         | -                | SF      | 1.203           | 1.750               | 25             | Grey Iron    |
| F168-8MX21-SF | 168          | D3   | 16.843          | 16.780         | -                | SF      | 1.203           | 2.000               | 28             | Grey Iron    |
| F180-8MX21-SF | 180          | D3   | 18.046          | 17.983         | -                | SF      | 1.203           | 2.000               | 29             | Grey Iron    |
| F224-8MX21-E  | 224          | 13   | 22.457          | 22.394         | -                | E       | 1.203           | 2.000               | 50             | Grey Iron    |

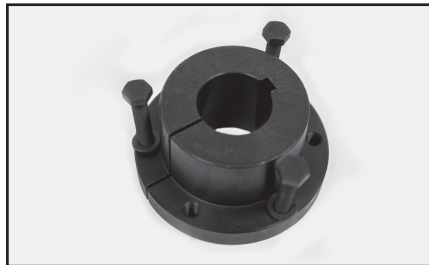


**B&B Manufacturing can tailor your order to your specific needs. We can plate in other materials such as nickel. We can add one or two flanges to your pulley. We can adhere to your special packing instructions.**

**Contact B&B Manufacturing for your specific requirements.**



For matching 8 mm Powerhouse MX™ pitch belts, see page 248.



For matching QD® bushings, see page 372.

